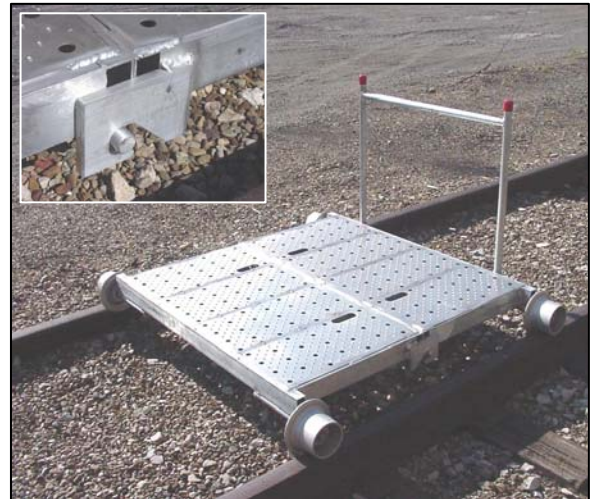


**NEW! ALUMINUM TOOL
AND SUPPLY CART**

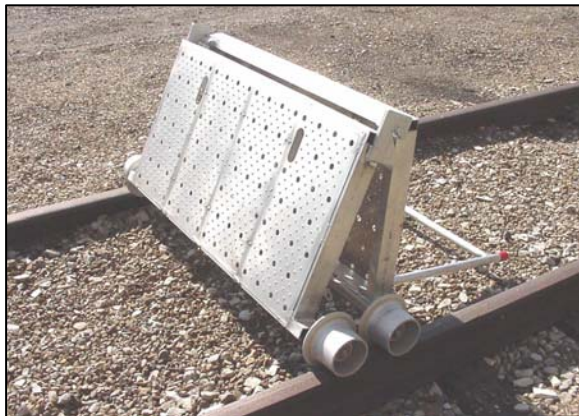
CALL US TOLL-FREE: 1-800-297-1383

FEATURES OF THE ATS-1:

- **Lightweight, two-piece design:** Easy one-person assembly, ergonomic handholds in deck surface
- **Heavy-duty, perforated aluminum deck:** Sturdy deck is fully welded at all seams, which prevents denting; no sharp edges or corners.
- **Deck platform above wheels:** Easy loading/unloading and smooth transporting of oversize materials.
- **Removable Push Handle:** Can be pushed or pulled in either direction.
- **Parking brake:** Provides safety during loading/unloading.



Cart is shown opened with handle inserted. Handholds in deck make set-up and disassembly easy. Closing latch (in close-up) is secure.



SPECIFICATIONS OF THE ATS-1 MODEL:

Total weight (assembled)*	98 lbs.
Load capacity	3,000 lbs.
Length (assembled)	50"
Width	49"
Height**	36"
Deck Height (above rails)	6-15/16"
Handle weight	5 lbs.
Deck size	50" x 49"

*Weight per section – 49 lbs.

**With 5" aluminum wheels and handle.

STILL AVAILABLE:

Nolan's Steel Tool and Supply Carts



- **TS-1** - 5" aluminum wheels, 175 lbs.
- **TS-2** - 8" aluminum wheels, 194 lbs.
- **TS-3** - 5" ductile alloy wheels, 201 lbs.

SPECIFICATIONS OF THE TS MODELS:

Load capacity	5,000 lbs.
Length (assembled)	56½"
Width	63½"
Height*	27⅞"
Deck Height (above rails)	9⅞"
Handle weight	6 lbs.
Deck size	46" x 45"

*With 5" aluminum wheels and handle.