

## ONE-PIECE STEEL CART: TS-7

### FEATURES:

- *One-Piece Design*
- *1,000 lb. (454 kg) Load Capacity*
- *36" x 48" (914 mm x 1,219 mm) Steel-perforated Deck*
- *Lightweight - 110 lbs. (49.9 kg)*
- *Parking Brakes on Both Ends of Cart*
- *Two-direction Travel with Removable Handle*
- *Insulated Axles with 5" (127 mm) Cast Aluminum Wheels*
- *Built for 56-1/2" (1,435 mm) Track Gauge (can be Customized to Fit Wider Track Gauge Only)*



TS-7

| MODEL # | LENGTH                | WIDTH                 | WEIGHT                | HEIGHT<br>(WITH HANDLE) | DECK HEIGHT<br>(ABOVE RAILS) | DECK AREA<br>(L X W)             | LOAD<br>CAPACITY       | WHEEL TYPE /<br>DIAMETER |
|---------|-----------------------|-----------------------|-----------------------|-------------------------|------------------------------|----------------------------------|------------------------|--------------------------|
| TS-7    | 43-1/2"<br>(1,105 mm) | 63-1/2"<br>(1,613 mm) | 110 lbs.<br>(49.9 kg) | 27-1/2"<br>(905 mm)     | 6-3/8"<br>(168 mm)           | 36" x 48"<br>(914 mm x 1,219 mm) | 1,000 lbs.<br>(454 kg) | Aluminum<br>5" (127 mm)  |

## TWO-PIECE STEEL CARTS: TS-4, TS-5, TS-6

### FEATURES:

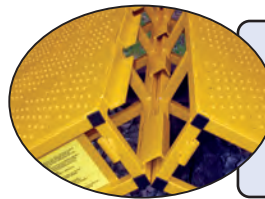
- Two-Piece Design Enables One Person Assembly
- 5,000 lb. (2,268 kg) Load Capacity
- 47-5/8" x 52-1/4" (1,210 mm x 1,327 mm) Steel-perforated Deck
- Carts Weigh Less than Original Models
- Two-direction Travel with Removable Handle
- Parking Brakes on Both Ends of Cart
- Insulated Axles with Cast Aluminum or Special Ductile Alloy Wheels
- Built for 56-1/2" (1,435 mm) Track Gauge (can be Customized to Fit Wider Track Gauge Only)
- No Additional Tools or Hardware Required to Assemble



TS-4 interlocking halves



The taller handle enables heavier loads to be moved easier.



#### INTERLOCKING ENDS

Join the two interlocking ends by positioning the two halves of the cart, with all the wheels on the rail, while keeping the center raised. Gradually lower the middle of the cart to create one solid unit.

#### SAFETY LATCH PIN

The safety latch pin locks the two halves together to prevent separation of the assembled cart. After use, simply remove pin and lift upward to separate halves.



#### PARKING BRAKES

The parking brakes located on both ends of cart secure the cart during loading and unloading, even on inclines.

| MODEL # | LENGTH (ASSEMBLED)    | WIDTH (ASSEMBLED)     | WEIGHT                | HEIGHT (WITH HANDLE) | DECK HEIGHT (ABOVE RAILS) | DECK AREA (L X W)                          | LOAD CAPACITY            | WHEEL TYPE / DIAMETER        |
|---------|-----------------------|-----------------------|-----------------------|----------------------|---------------------------|--|--------------------------|------------------------------|
| TS-4    | 56-3/4"<br>(1,441 mm) | 63-1/2"<br>(1,613 mm) | 168 lbs.<br>(76.2 kg) | 35-5/8"<br>(905 mm)  | 9"<br>(229 mm)            | 47-5/8" x 52-1/4"<br>(1,210 mm x 1,327 mm) | 5,000 lbs.<br>(2,268 kg) | Aluminum<br>5" (127 mm)      |
| TS-5    | 59-3/4"<br>(1,518 mm) | 63-1/2"<br>(1,613 mm) | 192 lbs.<br>(87.1 kg) | 37-1/8"<br>(943 mm)  | 10-1/2"<br>(267 mm)       | 47-5/8" x 52-1/4"<br>(1,210 mm x 1,327 mm) | 5,000 lbs.<br>(2,268 kg) | Aluminum<br>8" (203 mm)      |
| TS-6    | 56-3/4"<br>(1,441 mm) | 63-1/2"<br>(1,613 mm) | 204 lbs.<br>(92.5 kg) | 35-5/8"<br>(905 mm)  | 9"<br>(229 mm)            | 47-5/8" x 52-1/4"<br>(1,210 mm x 1,327 mm) | 5,000 lbs.<br>(2,268 kg) | Ductile Alloy<br>5" (127 mm) |

## TWO-PIECE ALUMINUM CARTS: ATS-1B, ATS-2B

### FEATURES:

- Two-Piece Design with Hand Holds Enables One Person Assembly
- 5,000 lb. (2,268 kg) Load Capacity
- 50" x 49" (1,270 mm x 1,245 mm) Aluminium-perforated Deck
- Lightweight Design
- Two-direction Travel with Removable Handle
- Parking Brakes on Both Ends of Cart
- Insulated Axles with 5" (127 mm) or 8" (203 mm) Cast Aluminum Wheels
- Built for 56-1/2" (1,435 mm) Track Gauge ONLY
- No Additional Tools or Hardware Required to Assemble



Hand holds in the **ATS-1B** deck make assembly easy.



**ATS-1B**

| MODEL # | LENGTH<br>(ASSEMBLED) | WIDTH<br>(ASSEMBLED)  | WEIGHT              | HEIGHT<br>(WITH HANDLE) | DECK HEIGHT<br>(ABOVE RAILS) | DECK AREA<br>(L X W)               | LOAD<br>CAPACITY         | WHEEL TYPE /<br>DIAMETER |
|---------|-----------------------|-----------------------|---------------------|-------------------------|------------------------------|------------------------------------|--------------------------|--------------------------|
| ATS-1B  | 50"<br>(1,270 mm)     | 63-1/2"<br>(1,613 mm) | 99 lbs.<br>(45 kg)  | 44"<br>(1,117 mm)       | 6-15/16"<br>(176 mm)         | 50" x 49"<br>(1,270 mm x 1,245 mm) | 5,000 lbs.<br>(2,268 kg) | Aluminum<br>5" (127 mm)  |
| ATS-2B  | 50"<br>(1,270 mm)     | 63-1/2"<br>(1,613 mm) | 128 lbs.<br>(58 kg) | 45-1/2"<br>(1,156 mm)   | 8-7/16"<br>(214 mm)          | 50" x 49"<br>(1,270 mm x 1,245 mm) | 5,000 lbs.<br>(2,268 kg) | Aluminum<br>8" (203 mm)  |

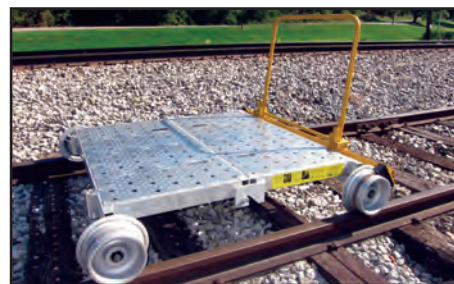
**COASTER BRAKE SYSTEM: RA-1442-4, RA-1442-5, RA-1442-7, RA-1442-8**

**FEATURES:**

- **Easy to Use** - Push handle forward to release urethane brakes allowing cart to move. Release handle and the cart rolls to a gentle stop.
- **Easy to Install** - Simply replace existing handle with integrated coaster brake system handle.



RA-1442-4 shown with ATS-2B cart



| MODEL #   | FITS CART | WEIGHT               |
|-----------|-----------|----------------------|
| RA-1442-4 | ATS-2B    | 26 lbs.<br>(11.8 kg) |
| RA-1442-5 | ATS-1B    | 26 lbs.<br>(11.8 kg) |
| RA-1442-6 | TS-4      | 26 lbs.<br>(11.8 kg) |
| RA-1442-7 | TS-5      | 26 lbs.<br>(11.8 kg) |
| RA-1442-8 | TS-6      | 26 lbs.<br>(11.8 kg) |

**DEAD MAN BRAKE SYSTEM: R1663, R1664**

**FEATURES:**

- **Easy to Use** - Brake is fully engaged until lever is squeezed to allow the cart to move.
- **Easy to Install** - Simply replace existing handle with integrated dead man brake system handle.



R1663 shown with ATS-2B cart



| MODEL # | FITS CART  | WEIGHT              |
|---------|------------|---------------------|
| R1663   | ATS Series | 15 lbs.<br>(6.8 kg) |
| R1664   | TS Series  | 12 lbs.<br>(5.4 kg) |